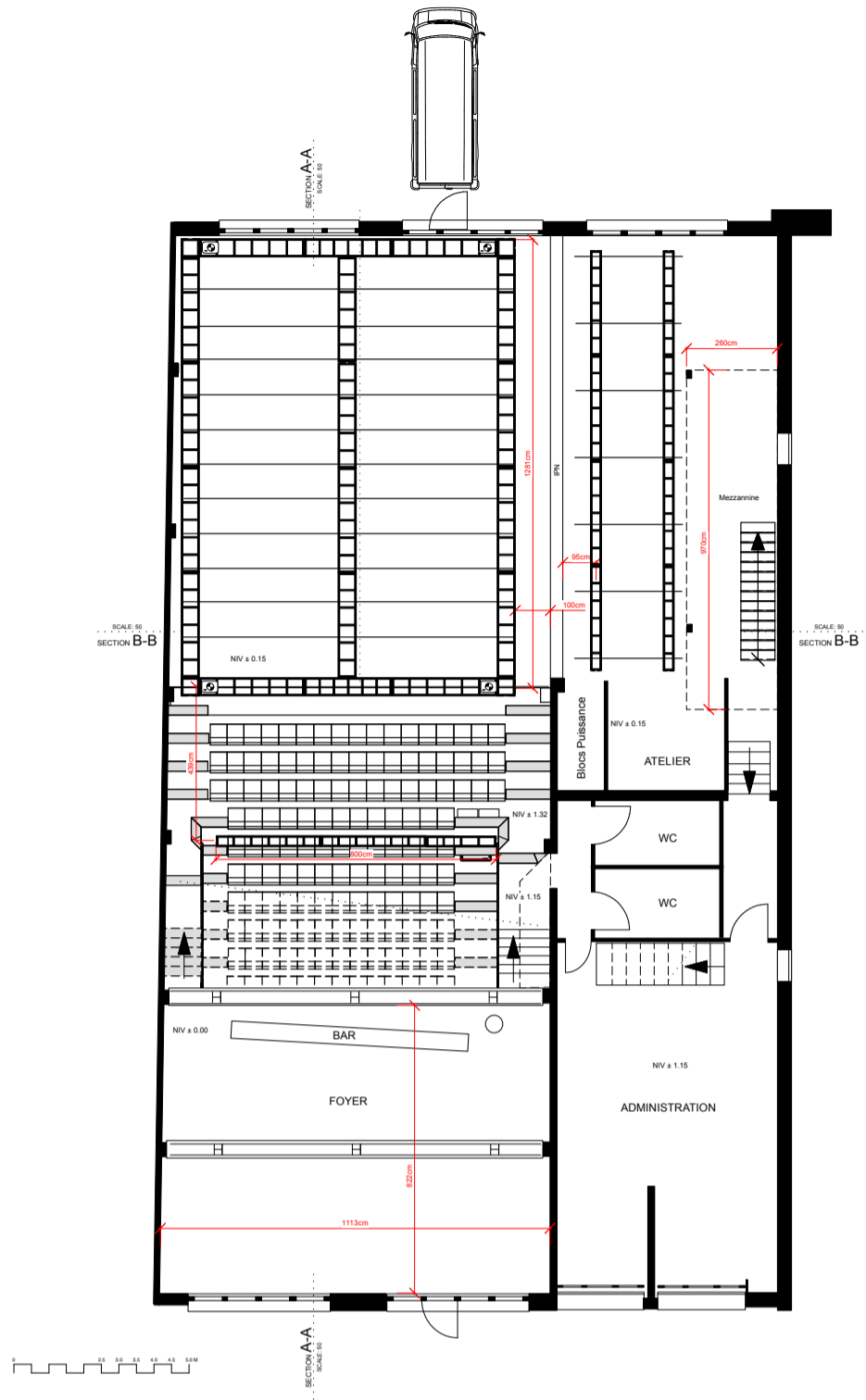
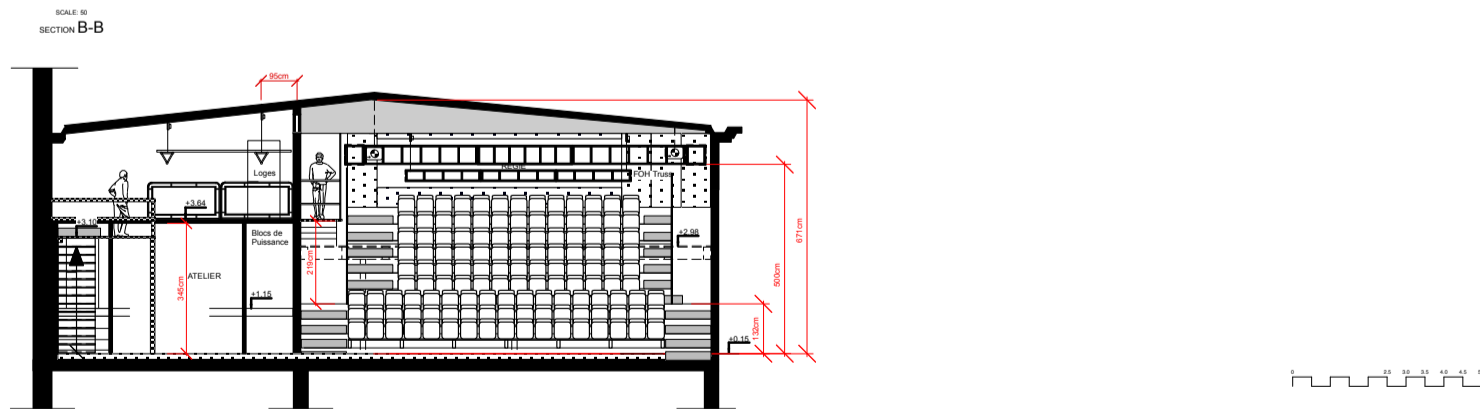
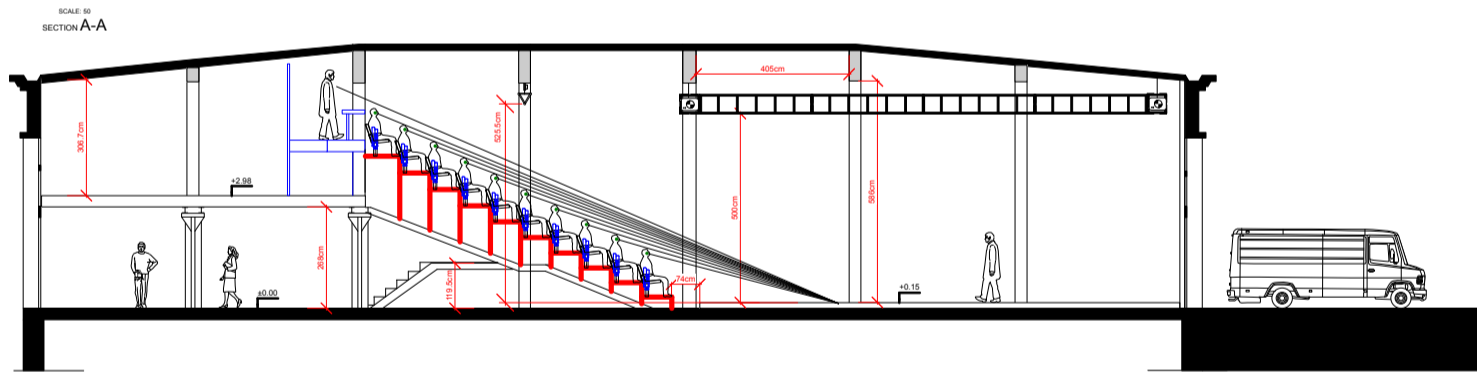
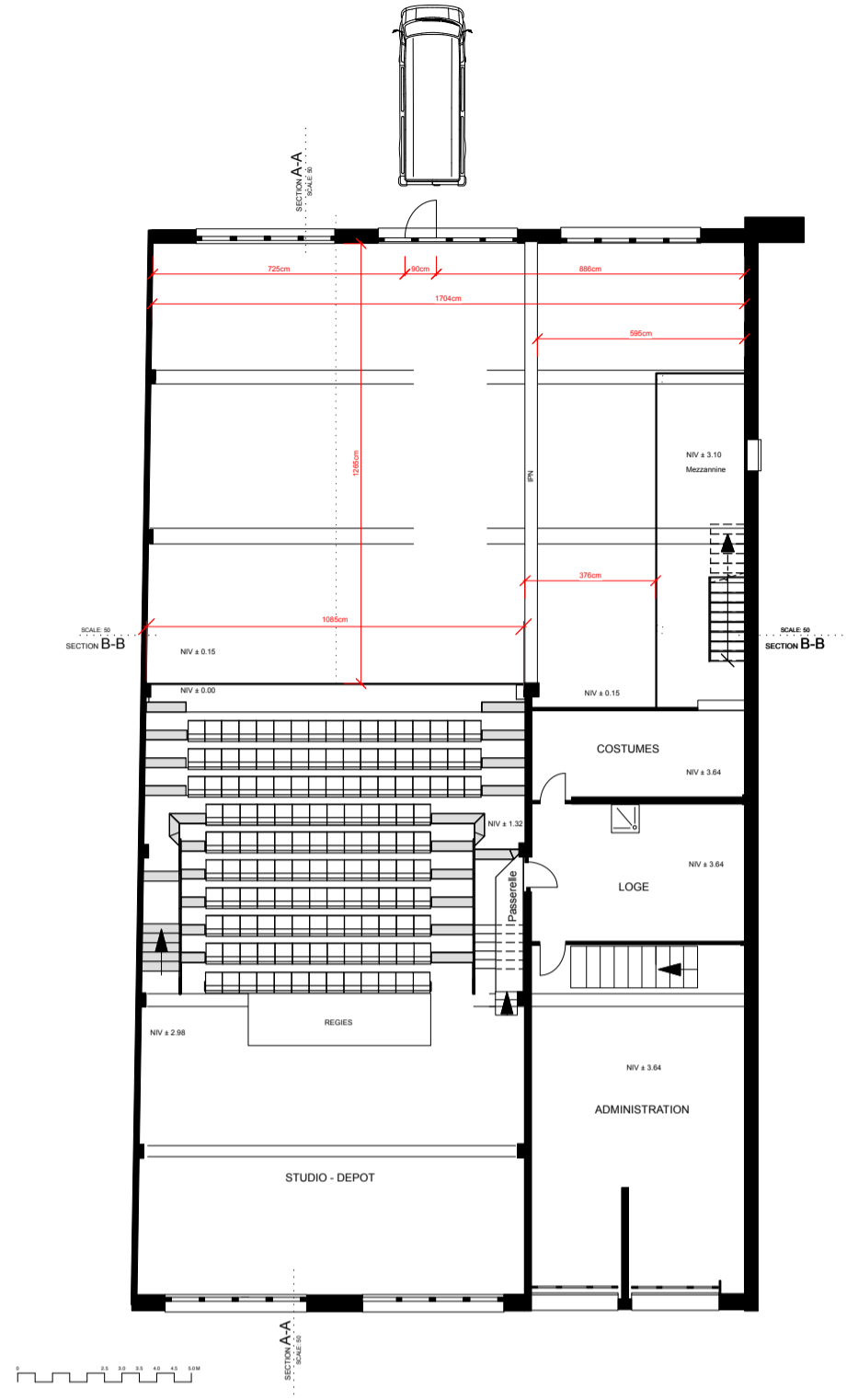


Plan Rez-de-chaussée



Plan Etage



Projet: PLAN IMMEUBLE
 Lieu: THEATRE SEVELIN 36
 Contenu:
 Plan #: 200-001

Mise en scène:
 Scénographie:
 Musique:
 Chorégraphie:
 Lumières:
 Dessiné: yse
 Date: 10.10.2011

Echelle: 1/200
 Format: SRA3

Revision: A D G
 B E H
 C F I

THÉÂTRE SEVELIN 36
 UN LIEU POUR LA DANSE

CP 110 - 1000 Lausanne 20 - Switzerland
 Tél 41 - 21 620 00 10
 Fax 41 - 21 620 00 19
 e-mail : info@theatresevelin36.ch